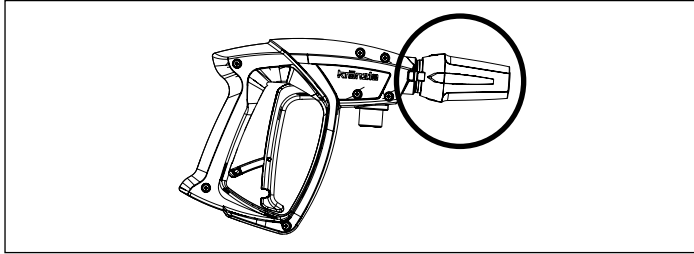


Description of high-pressure cleaner

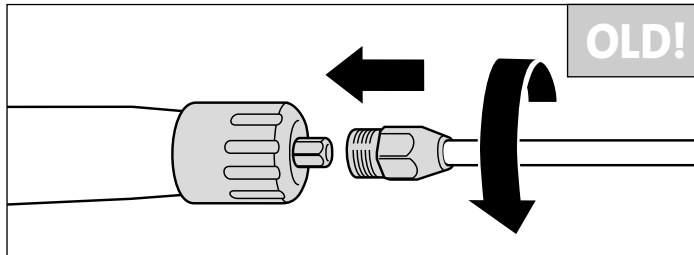
Gun and accessories immediately with plug connection instead of with screwing

Advantage: Faster change of accessories possible!

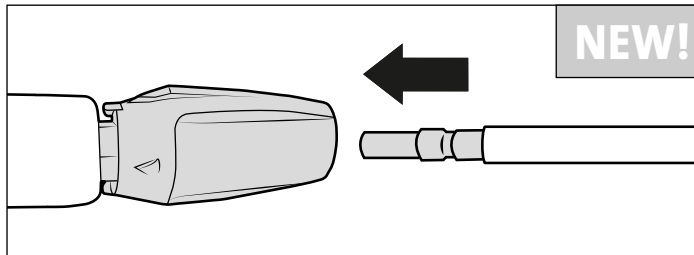


Safety trigger gun (M2000, short version) new with plug coupling

Comparison



So far: pistol (left) and lances/other accessories (right) with screw connection.

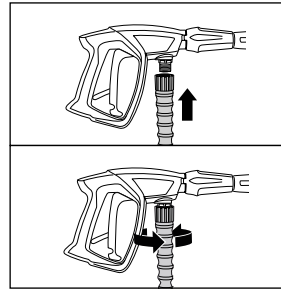


New: Pistol (left) with plug coupling, lances and other Accessories (right) with plug nipple.

Putting into operation

High-pressure hose immediately with rotatable screw connection

High-pressure hose rotates on the safety shut-off pistol, allowing loop-free operation.

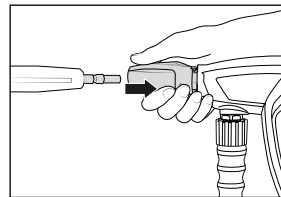


Mount the grey rotating screw connection of the high-pressure hose onto the trigger gun incorporating a safety catch. Afterwards screw together ensuring a snug and pressure-tight fit.

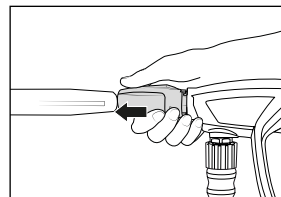
Due to the swivel fitting, the hose rotates without coming loose from the gun.

Gun with plug-in coupling instead of screw connection

How to attach the lances/other accessories to the pistol?



First pull back the retaining sleeve of the safety trigger gun, then insert lance into the plug coupling connection of the safety trigger gun.



After insertion of the lance, release retaining sleeve and make sure that the lance is in a secure position.
Grease quick release nipple regularly using acid-free grease.



During operation, the plug-in coupling must not be operated/touched! High risk of injury!



Prior to insertion, check plug coupling connection of lance for cleanliness (sand, dirt ..) and use clear water to clean, if necessary. Impurities may damage the sealing in the plug coupling.

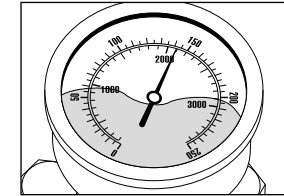
Small repairs - do it yourself

Problem

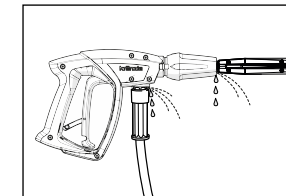
After closing the safety trigger gun the high-pressure cleaner keeps switching on and off. The stainless steel pressure gauge continuously displays full pressure.

Possible cause No. 1

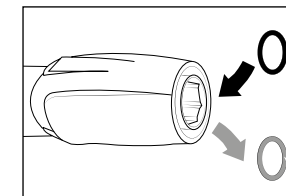
Leakage.



Having closed the trigger gun with safety catch, the high-pressure cleaner must shut down and the stainless steel pressure gauge must show the permitted deactivation pressure (see rating plate). If not shut down and the stainless steel pressure gauge continuously shows full pressure (device does not switch to bypass), this could be due to leakage at the high-pressure pump, at the pressure switch, at the high-pressure hose or at the trigger gun with safety catch.



Proceeding: Check connections from the high-pressure cleaner to the high-pressure hose and from the high-pressure hose to the safety trigger gun and also the connection between lance and safety trigger gun for tightness.



Switch off the cleaner. Shortly press the trigger of the trigger gun with safety catch to decrease the pressure. Remove high-pressure hose, trigger gun with safety catch and lance and check the O-rings. If the O-rings are damaged they have to be replaced.



In case of a leakage there is no guarantee for possible consequential damages.